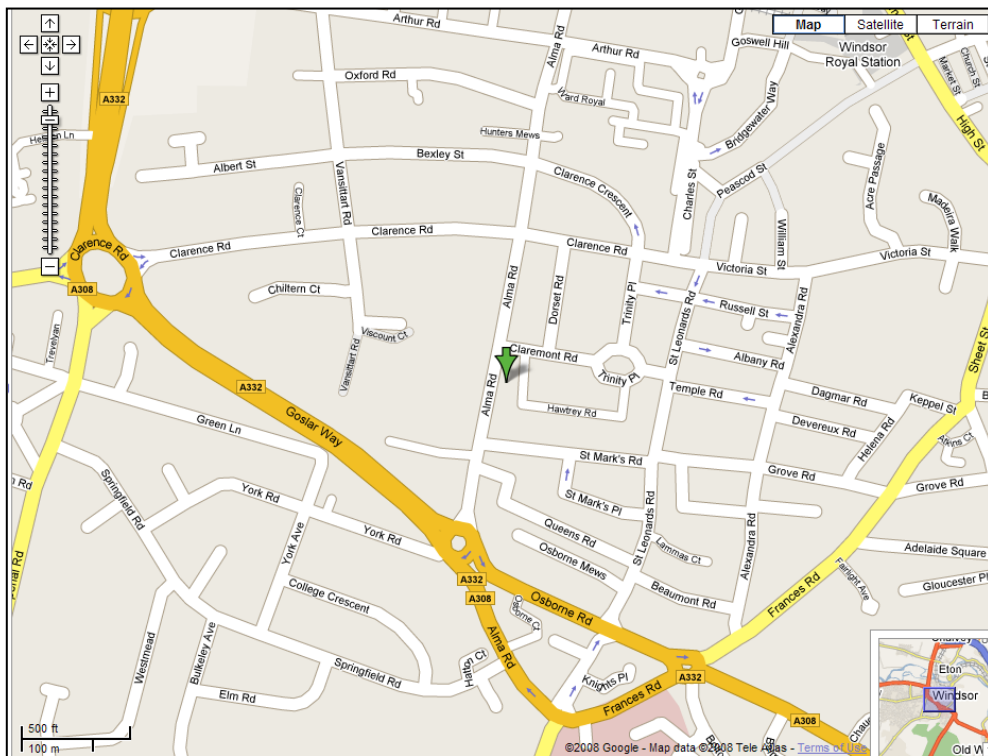


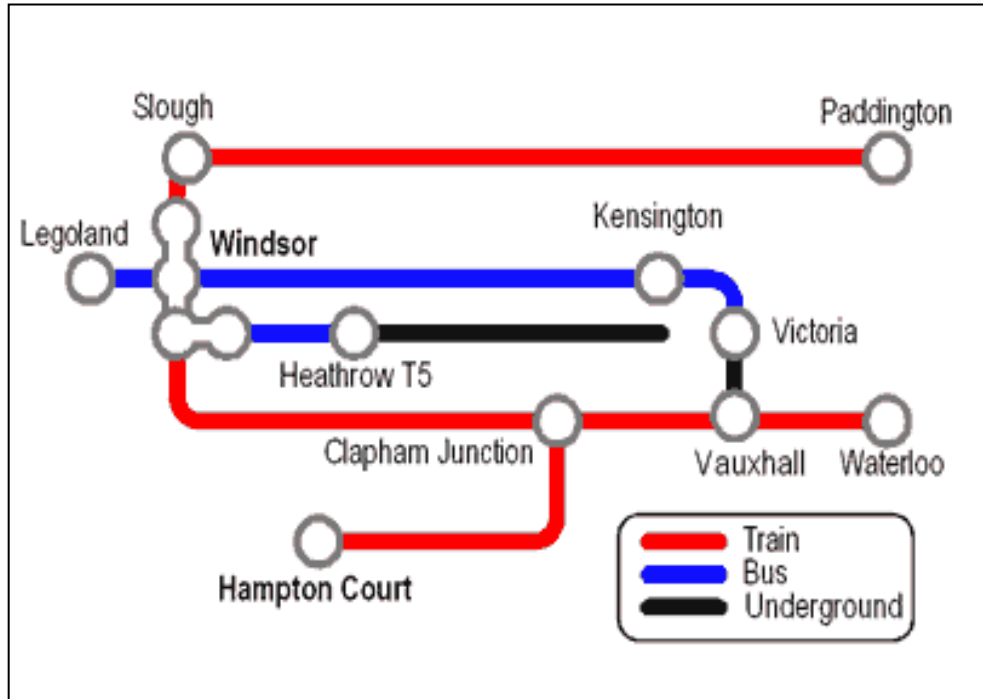
## How to get to Windsor & Alma House B&B

We are here:

Alma House B&B 56 Alma Road, Windsor, Berkshire SL4 3HA

Tel: +44 (0) 1753 833 747





## TRAVELLING FROM LONDON TO WINDSOR

### By Bus:

The most economical method of public transport is the bus; it also offers a more interesting and scenic journey. Bus fares are variable but if you ensure you travel outside of rush hour and peak travel times the fares will be reasonable. The coach leaves from The Greenline Coach Station, located behind the Victoria Train Station. There are various stops and boarding points on the journey including Hyde Park Corner, Kensington High Street and Olympia. The bus stops outside Windsor Castle, however the last stop is not Windsor so make sure you're paying attention! Please see <http://www.rainbowfares.com/maps/index.htm> for more information.

### By Train:

From London Waterloo you can catch a train to Windsor Riverside Station. The journey takes around 56 minutes and is the most direct route from London to Windsor.

### By Car:

Follow the signs from anywhere in London towards 'M4 and the West.' Join the M4 motorway heading westbound. Once on the M4 you need to exit at junction 6, signposted 'Slough and Windsor.' Bear left as you exit the motorway, following the signs for Windsor.

### By Taxi:

There is no shortage of Black Cabs in London, you will find them located outside all train stations and you can pick them up all over London, whenever you see a taxi with its light on. As Windsor is outside the metropolitan area, travelling by taxi can be very expensive, ensure you agree the price at the start of the journey. Booking a Windsor Taxi in advance will be much cheaper. We recommend **Windsor Cars**: 01753

677677 or **5 Star Cars**: 01753 858888. Please see the guest resource page on our website for more taxi company information.

## **TRAVELLING FROM WINDSOR TO LONDON**

### **By Bus:**

The Green Line Bus Service offers a scenic and cheap method of public transport. You can board the coach opposite the castle and travel into London seeing sites on your way. Fares are reduced if you travel outside of rush hour and peak travel times. There are various stops all over London, please see <http://www.rainbowfares.com/maps/index.htm> for more information.

### **By Train:**

There are two railway stations in Windsor. Windsor Riverside and Windsor and Eton Central, also known as Royal Windsor Station.

#### **Windsor Riverside Station:**

This train station goes to London Waterloo. The journey takes around 56 minutes and is the most direct route to London of the two Windsor rail stations. Windsor is the end of the line.

#### **Windsor and Eton Central:**

This station runs only to Slough railway station and back. The train leaves twice an hour and the journey takes around 5 minutes. From Slough train station you can join many rail links, below are some of the destinations:

- London Paddington
- Oxford
- Bath
- Reading
- Exeter St. Davids

It is also possible to travel to Wales and the West Country from this station. The service to London from this station is much quicker and more regular, trains run approximately every 10 minutes. For more information regarding timetables, tickets and costs please see <http://nationalrail.co.uk/>

### **By Car:**

To get to London by car you will need to join the M4 motorway at junction 6 going eastbound. The M4 runs all the way into Chiswick at which point it turns into the A4. The A4 runs directly into central London (through Piccadilly Circus.) The M4 joins the M25 (The London Orbital) at Junction 4b, which you can take in either a clockwise or anti-clockwise direction (North or Southbound). The M25 gives easy access to all major roadways around the London area – but be aware of the traffic jams!

### **By Taxi:**

There are various taxi companies in Windsor that will be happy to take you into London. We recommend **Windsor Cars**: 01753 677677 or **5 Star Cars**: 01753 858888. Please see the guest resource page on our website for more taxi company information.

## **TRAVELLING FROM SLOUGH TO WINDSOR**

### **By Bus:**

You can take the bus from Slough Bus Station to Windsor Town Centre. Depending on the route, there are various stops in Windsor, including St Leonards Road and Windsor High Street (by the parish church.) Please see <http://www.firstgroup.com/index.php> for more information regarding timetables and ticket information.

### **By Train:**

Slough has a direct train link with Windsor however; this is only to Windsor and Eton Central Station. The journey takes around 6 minutes. For more information regarding timetables, tickets and costs please see <http://nationalrail.co.uk/>

### **By Car:**

From Slough Town Centre head west on the A4 until you see signs for the M4 motorway and A355. Turn left onto A355 heading towards the M4 motorway. Stay on the A355, going straight over the motorway junction roundabout, stay on this road and it will bring you to Windsor, you will come to a major roundabout which is well signposted for Windsor Town Centre, Maidenhead and all other routes.

### **By Taxi:**

Windsor is a short journey away from Slough so a taxi should be relatively inexpensive, costing around £10. We recommend **Windsor Cars:** 01753 677677 or **5 Star Cars:** 01753 858888. Please see the guest resource page on our website for more taxi company information.

## **TRAVELLING FROM WINDSOR TO SLOUGH**

### **By Bus:**

The main point at which you can catch the bus to Slough is opposite the Castle, by the Parish Church. This route will then take you to Slough Bus Station. Please see <http://www.firstgroup.com/index.php> for more information regarding timetables and ticket information.

### **By Train:**

Windsor and Eton Central Station has a direct link to Slough train station. The journey takes around 6 minutes. For more information regarding timetables, tickets and costs please see <http://nationalrail.co.uk/>

### **By Car:**

Head towards the major Goslar Way roundabout, from here Slough will be well signposted.

### **By Taxi:**

Slough is a short journey away from Windsor so a taxi should be relatively inexpensive, costing around £6.50. We recommend **Windsor Cars**: 01753 677677 or **5 Star Cars**: 01753 858888. Please see the guest resource page on our website for more taxi company information.

## **AIRPORTS**

### **HEATHROW**

#### **TRAVELLING FROM HEATHROW TO WINDSOR**

##### **By Bus:**

First Bus Service (route 77) runs between Heathrow Central Bus Station and Windsor. Monday – Saturday the service runs twice hourly until late, on Sundays the service runs once an hour. The journey takes around 40 minutes. The bus station is located directly above the Underground station at Heathrow Central. For more information regarding tickets, timetables and price guides please visit [http://www.firstgroup.com/ukbus/southeast/berkshirethames/timetables/timetable.php?day=1&source\\_id=2&service=77&routeid=11204&operator=1&source=sp](http://www.firstgroup.com/ukbus/southeast/berkshirethames/timetables/timetable.php?day=1&source_id=2&service=77&routeid=11204&operator=1&source=sp)

##### **By Train:**

The Heathrow Express train service runs to London Paddington Station. It is a frequently used service which offers a speedy journey. From Paddington Station you can travel to Slough, change once again and take the train to Windsor Central Station.

##### **By Car:**

From the airport follow signs to M4 eastbound, signposted Slough Central and Windsor. Stay on M4 until junction 6 sign posted Slough Central and Windsor. Exit at Junction 6, from here the Town Centre, Maidenhead and all other directions are well sign posted.

##### **By Taxi:**

Booking a Windsor taxi company to collect you from the airport will most probably be the cheapest method of travelling by taxi, a one-way journey will cost around £15. We recommend **Windsor Cars**: 01753 677677 or **5 Star Cars**: 01753 858888. Please see the guest resource page on our website for more taxi company information.

#### **TRAVELLING FROM WINDSOR TO HEATHROW**

##### **By Bus:**

First Group Bus Service provide a Windsor – Heathrow Route, you can board the bus at the stop on Peascod Street. Please see <http://www.firstgroup.com/ukbus/southeast/berkshirethames/home/> for more information regarding timetables and ticket information.

##### **By Train:**

In order to get to Heathrow airport via train you will have to change at various stations. Start at Windsor and Eton Central Station, take the train to Slough. When you arrive in Slough you need to board the train London Paddington Station, from here you can board an express train to Heathrow.

**By Car:**

If you are travelling to Heathrow Airport from Windsor you will need to join the M4 at junction 6 heading eastbound, then the M25 southbound at junction 4b. From here the airport and all terminals are well signposted. Follow the signs for your terminal.

**By Taxi:**

Depending on traffic, the journey usually takes around 30-40 minutes. You should expect to pay around £15 for a one-way journey. We recommend **Windsor Cars:** 01753 677677 or **5 Star Cars:** 01753 858888. Please see the guest resource page on our website for more taxi company information.

**GATWICK**

**TRAVELLING FROM GATWICK TO WINDSOR**

**By Bus:**

We would not recommend travelling to Windsor from Gatwick by bus; it is a long and costly trip. You can take a bus from Gatwick to London Victoria Station, from here you can join another bus service located behind Victoria Station. There are various stops on the journey. The bus stops outside Windsor Castle, however the last stop is not Windsor so make sure you are paying attention! Please see <http://www.rainbowfares.com/maps/index.htm> for more information.

**By Train:**

The Gatwick Express train service runs to London Victoria Station only. When you arrive at London Victoria you will need to use the underground services and take a train to London Paddington. When you arrive at Paddington Station you need to board the train to Slough Train Station, When you arrive at Slough you need to board a train Windsor and Eton Central Station.

**By Car:**

From the airport follow signs to M23, join the M23 heading northbound, signposted London and Croydon, exit M23 at junction 8 and join the M25 westbound, signposted Heathrow. Stay on M25 until junction 15, exit M25 and join M4, signposted The West. Exit M4 at junction 6 signposted Slough Central and Windsor, from here the Town Centre, Maidenhead and all other routes are well signposted.

**By Taxi:**

A one-way trip from Gatwick airport will cost around £48, there will be taxis outside the terminal of the airport. Alternatively you can pre book a taxi, or call one from the arrivals lounge. We recommend **Windsor Cars**: 01753 677677 or **5 Star Cars**: 01753 858888. Please see the guest resource page on our website for more taxi company information.

### **TRAVELLING FROM WINDSOR TO GATWICK**

#### **By Bus:**

You can catch a bus from Windsor High Street, outside the Parish Church, to London Victoria Train Station. From here you can board a National Express service that will take you to Gatwick. Please see <http://www.rainbowfares.com/maps/index.htm> for more information regarding the Windsor to London journey. For more information about the National Express service please see <http://www.nationalexpress.com/home/hp.cfm?agentid=baa1>

#### **By Train:**

Start at Windsor and Eton Central Train Station, from here take the train heading to Slough. When you arrive in Slough you need to board the train heading to London Paddington Station. When you arrive at Paddington Station you need to board the underground system and take a train to London Victoria, from here you can travel directly to Gatwick as the express line runs between Gatwick and London Victoria Station.

#### **By Car:**

If you are travelling to Gatwick Airport from Windsor you will need to join the M4 at junction 6 heading eastbound, then join the M25 going southbound. Leave the M25 at junction 7 and join the M23 heading southbound. Leave the M23 at junction 9 and follow the signs for the airport.

#### **By Taxi:**

You should expect to pay around £48 for a one-way trip to Gatwick airport. We recommend **Windsor Cars**: 01753 677677 or **5 Star Cars**: 01753 858888. Please see the guest resource page on our website for more taxi company information.

### **STANSTED**

### **TRAVELLING FROM STANSTED TO WINDSOR**

#### **By Bus:**

A bus service is provided which runs between Stansted Airport and London Victoria Station. From here you can join another bus service located behind Victoria Station. There are various stops on the journey, the bus stops outside Windsor Castle, however the last stop is not Windsor so make sure you are paying attention! Please see <http://www.rainbowfares.com/maps/index.htm> for more information.

#### **By Train:**

From Stansted airport, take the train to London Liverpool Street Station, now switch to the underground system and take the train to London Paddington Station, from here you can catch a train to Slough. At Slough you need to change lines once again and board the train stopping at Windsor and Eton Central Station. For more information regarding timetables, tickets and costs please see <http://nationalrail.co.uk/>

**By Car:**

From the airport head towards A120 and M11, join M11 heading south. At junction 6 exit the M11 and join M25 signposted Watford. Continue on M25 until Junction 15, exit the M25 and join M4 signposted Slough and Reading. Continue on M4 until junction 6, signposted Slough Central and Windsor. From here the Town Centre, Maidenhead and all other routes are well signposted.

**By Taxi:**

A one-way trip from Stansted airport will cost around £75, there will be taxis outside the terminal of the airport. Alternatively you can pre book a taxi, or call one from the arrivals lounge. We recommend **Windsor Cars:** 01753 677677 or **5 Star Cars:** 01753 858888. Please see the guest resource page on our website for more taxi company information.

**TRAVELLING FROM WINDSOR TO STANSTED**

**By Bus:**

You can catch a bus from Windsor High Street, outside the parish church, to London Victoria Train Station. From Victoria Station you can catch the service provided which runs to Stansted airport.

**By Train:**

Start at Windsor and Eton Central Station and take the train to Slough. When you arrive at Slough board the train heading towards Paddington Station. When you arrive at Paddington, take the underground to Liverpool Street Station; from here you can take the train to Stansted airport. For more information regarding timetables, tickets and costs please see <http://nationalrail.co.uk/>

**By Car:**

If you are travelling to Stansted Airport from Windsor you will need to join the M4 at junction 6 heading eastbound. Join the M25 at junction 4b going northbound. Leave the M25 at junction 27 and join the M11 northbound. Leave the M11 at junction 8 and join the A120, from here follow the signs for the airport.

**By Taxi:**

You should expect to pay around £75 for a one-way journey to Stansted. We recommend **Windsor Cars:** 01753 677677 or **5 Star Cars:** 01753 858888. Please see the guest resource page on our website for more taxi company information.

**LUTON**

## **TRAVELLING FROM LUTON TO WINDSOR**

### **By Bus:**

The Greenline Bus Company operates a service (757) between Luton airport and London Victoria; this service leaves from bays 10&11 at the airport. When you arrive in London Victoria you can then take a second Greenline coach, to Windsor, the coach will stop outside the castle. Please see <http://www.greenline.co.uk> for more information regarding timetables and tickets.

### **By Train:**

Travelling by train from Luton Airport is a long journey involving at least 3 train line changes. Take the train from Luton Airport Parkway to London St. Pancras Domestic. When you arrive in St Pancras take the underground to London Paddington Station. When you arrive in Paddington take the train to Slough Station, from here you take a train directly to Windsor and Eton Central Station. For more information regarding tickets and planning your journey please see <http://www.nationalrail.co.uk/>

### **By Car:**

Follow signs to M1 and join motorway southbound, signposted London. Continue on the M1 until junction 6a, exit M1 and join M25 towards M40/M4. Continue on M25 until junction 15, exit the motorway and join M4, signposted Slough and Reading. Exit M4 at junction 6 signposted Slough Central and Windsor. From here the Town Centre, Maidenhead and all other routes are well signposted.

### **By Taxi:**

A one-way trip from Luton airport will cost around £48, there will be taxis outside the terminal of the airport. Alternatively you can pre book a taxi, or call one from the arrivals lounge. We recommend **Windsor Cars:** 01753 677677 or **5 Star Cars:** 01753 858888. Please see the guest resource page on our website for more taxi company information.

## **TRAVELLING FROM WINDSOR TO LUTON**

### **By Bus:**

You can catch a Green Line bus from Windsor High Street, outside the Parish church, which will take you to London Victoria station. From London Victoria you will need to change onto the service running to Luton Airport. Please see <http://www.greenline.co.uk> for more information regarding timetables and tickets.

### **By Train:**

You need to start at Windsor and Eton Central Station, from here take the train to Slough. When you arrive in Slough take the train to London Paddington Station. From Paddington you will need to take the underground to St Pancras Domestic Station. From here you can board a train to Luton Airport Parkway. For more information regarding tickets and planning your journey please see <http://www.nationalrail.co.uk/>

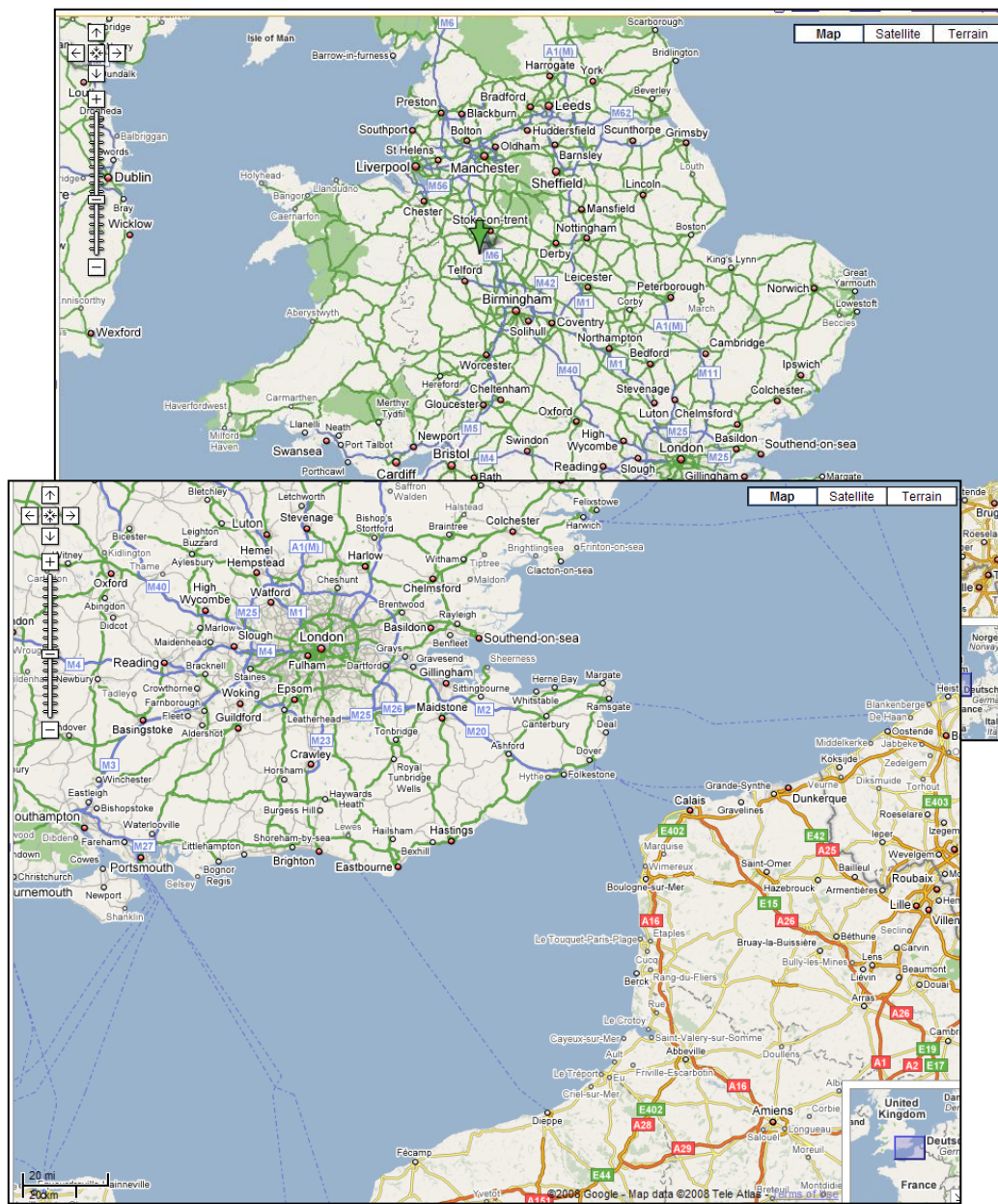
### By Car:

If you are travelling to Luton Airport from Windsor you will need to join the M4 at junction 6 heading eastbound. Join the M25 at junction 4b going northbound. Leave the M25 at junction 21a, bear left and join M1 northbound. Stay on M1 until junction 10, exit the motorway, bear right and follow signs to Luton airport.

### By Taxi:

Travelling to Luton is going cost around £48 for a one-way trip.

We recommend **Windsor Cars:** 01753 677677 or **5 Star Cars:** 01753 858888. Please see the guest resource page on our website for more taxi company information.



## **Ferries**

Brittany Ferries offer several services to and from England, France and Spain. Their website offers detailed information regarding ferry timetables and ticket information. They have various ports in England and offer many different destinations:

- Plymouth to Roscoff and Santander.
- Portsmouth to Caen, Cherbourg and St Malo.
- Poole to Cherbourg.

Please see <http://www.brittany-ferries.co.uk/> for more information regarding timetables and ticket information.

## **PLYMOUTH**

### **By Bus:**

At the main Plymouth bus station you can board a bus heading to London Victoria Station, once you arrive at London Victoria you need to board a second bus heading towards Slough bus station. On arrival at Slough you need to transfer to another bus stopping on Thames Street, opposite the castle.

Please see <http://www.rainbowfares.com/maps/index.htm> and <http://www.nationalexpress.com/> for more information regarding travel timetables and ticket prices.

### **By Train:**

From Plymouth ferry port you can board a bus which will take you to the train station. When you arrive at Plymouth train station you need to board a train to London Paddington Station. On arrival at Paddington Station you will need to board a second train to Slough. When you arrive in Slough you need to board a final train to Windsor and Eton Central station.

For more information regarding timetables, tickets and cost please see <http://nationalrail.co.uk/>

### **By Car:**

Head towards A374, join A38 and follow signs for M5, Taunton, Honiton and Barnstaple. Continue on M5 until junction 15 and exit on M4, signposted London. Continue on M4 until junction 6 take the exit sign posted Slough (Central) and Windsor. From here Windsor town centre and all other major routes will be well signposted.

## **PORTSMOUTH**

### **By Bus:**

From Portsmouth ferry terminal you need to go to London Victoria Station. On arrival at London Victoria, you need to board a bus heading to Slough bus station. When you arrive at Slough you can board the final bus heading to Windsor. The bus will stop outside the parish church (opposite the castle) this is where you need to get off the bus.

### **By Train:**

From the ferry port you need to head towards Portsmouth Harbour, from here you can take a train to Clapham Junction. On arrival at Clapham Junction you need to board a train heading to Windsor and Eton Riverside station.

### **By Car:**

From the harbour you need to head towards M257, join the M257, signs for M27. At junction 12 join M27 westbound, continue on M27 and join M3, signs for London and Winchester. At junction 3, take the A322 exit, signposted Woking, Bracknell and Lightwater. After exiting the motorway follow signs for Ascot and Windsor will follow.

## **POOLE**

### **By Bus:**

You need to board the bus at the Dolphin Centre Bus Station from here you can travel to London Victoria Station. On arrival at London Victoria station you will need to travel to Slough Bus Station, from here you can take a final bus to Windsor. The bus will stop outside the parish church (opposite the castle.)

### **By Train:**

Poole train station is located about 25 minutes walk from the ferry terminal. From Poole train station you need to board a train heading to Clapham Junction, on arrival at Clapham Junction you need to board a train to Windsor and Eton Riverside. Please see <http://nationalrail.com/> for more information regarding timetables, tickets and cost.

**By Car:**

Follow the A350 heading towards A3049, once you join A3049 continue following signs for A348 and Ringwood. Exit onto A31, continue on this road and will merge into M27, signposted Southampton and London. Follow M27 until junction 4 exit onto M3 signposted London and Winchester. Continue on M3 until junction 3, signposted Woking, Bracknell and Lightwater. Follow signs to Ascot and Windsor will follow.

**USEFUL LINKS**

<http://www.heathrowairport.com/>

<http://www.stanstedairport.com/>

<http://www.gatwickairport.com/>

<http://www.london-luton.co.uk/en/>

<http://www.nationalrail.co.uk/>

<http://www.greenline.co.uk/>

<http://www.rainbowfares.com/>

<http://www.nationalexpress.com/>

<http://www.firstgroup.com/index.php>